



An ISO 9001 : 2015 Certified Company



*Lights to Illuminate
Home & Hearts*

PRODUCT CATALOG

CONTENTS

| <u>SEGMENTS</u> | <u>PAGES</u> |
|--|---------------------|
| COMPANY PROFILE | 03 - 06 |
| SOLAR LIGHTS SERIES | 07 - 15 |
| SMART LIGHTS SERIES | 16 - 19 |
| ARCHITECTURAL LIGHTS SERIES | 20 - 26 |
| LANDSCAPING & UNDER WATER LIGHTS SERIES | 27 - 32 |
| OUTDOOR LIGHT SERIES | 33 - 37 |
| EMERGENCY LIGHT SERIES | 38 - 39 |
| COB DOWNLIGHT & TRACK LIGHTS SERIES | 40 - 44 |
| PROFILE, ROPE & STRIP LIGHTS SERIES | 45 - 48 |
| RECESSED PANEL LIGHTS SERIES | 49 - 54 |
| SURFACE PANEL LIGHTS SERIES | 55 - 59 |
| DEEP JUNCTION & CONCEALED LIGHTS SERIES | 60 - 62 |
| BULB & BATTEN LIGHTS SERIES | 63 - 66 |
| UPCOMING PRODUCTS | 67 - 70 |



Nitin Jain

MESSAGE FROM OUR CHAIRMAN

I'm deeply honored to established and lead **HiWAY Lighting Solutions Pvt. Ltd.**, a renowned LED brand in India. I did Master of Computer Application degree from RGPV University in Indore and worked for 13 years in IT industries as Solution Architect and had wide industries experience by working different countries and cultures. I worked in USA, Denmark, Australia and China for many years. I have executed million dollar projects successfully across countries. Due to progressive vision and strong felling to serve for India, I quit the job in USA and started my own business in LED Lights. I started business carrier with products trading, setup own brand and in a very short period of time setup a manufacturing unit as "**HiWAY Lighting Solutions Pvt. Ltd.**"

Agility and innovation will be crucial to our continued success. Let's build on our past achievements, embrace the future together and continue exceeding expectations.

As a Chairperson, I pledge to lead **HiWAY** company with vision, integrity and unwavering dedication to our core values. Let's reaffirm our commitment to excellence, foster collaboration and inclusivity and strive to exceed expectations. I extend my most profound appreciation to every member of the HiWAY family. Let's march forward, inspired by our past achievements and driven by limitless possibilities. Relationships are key to success. We value our customers trust ad strive to exceed their expectations through open communication and collaboration.

Thank you for considering **HiWAY family**.

We Believe light is more than just illumination. it is innovation, progress, and the path to a sustainable future.

ENTERPRISE INTRODUCTION

Hiway Lighting Solutions Pvt. Ltd. is a premier Indian manufacturer, trader, and exporter specializing in advanced, energy-efficient **LED lighting solutions**. We provide a comprehensive range of products for commercial, industrial, infra structural, and smart outdoor applications.

Our commitment to excellence is rooted in combining innovation, energy efficiency, and durability to meet the demands of modern infrastructure projects. Our strategic associations with industry leaders, continue to reinforce our strong presence in the Indian infrastructure market.

Our Product Range: We offer an extensive selection including LED street lights, flood lights, solar-powered systems, recessed panels, track lights, and smart lighting solutions featuring motion and daylight sensors. Designed for use in diverse environments—from highways and industrial zones to corporate buildings and smart cities—our products guarantee exceptional performance and substantial energy savings. We utilize state-of-the-art manufacturing processes and uphold rigorous quality control, ensuring every product is a testament to our commitment to quality and responsibility.

NAME : HIWAY LIGHTING SOLUTIONS PRIVATE LIMITED
GSTN : 23AAECH7954D1ZO
STATE : Madhya Pradesh
ADDRESS : SURVEY NO. 142/2, VILLAGE GARIPILIYA
SAWER, INDORE, Indore, Madhya Pradesh, 453771

NAME : HIWAY LIGHTING SOLUTIONS FZ-LL
ADDRESS : CFDRK7222, Compass Building, Al Shohada Road,
Al Hamra Industrial Zone-FZ, Ras Al Khaimah, United
Arab Emirates
PHONE : +971 54 482 9592
Email : info@hiwayledlights.com
G Website : www.hiwayledlights.com

NAME : HIWAY LIGHTING SOLUTIONS PRIVATE LIMITED
GSTN : 10AAECH7954D1ZV
STATE : Bihar
ADDRESS : B-72, TRANSPORT NAGAR, BAHADURPUR,
KUMHRAR, Patna, Patna, Bihar, 800007

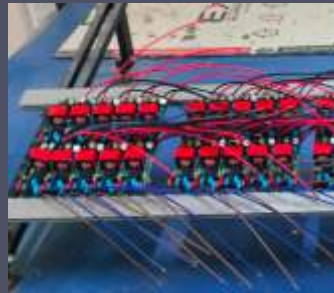
NAME : HIWAY LIGHTING SOLUTIONS PRIVATE LIMITED
GSTN : 09AAECH7954D1ZE
STATE : Uttar Pradesh
ADDRESS : E-174, Kanpur Road, Transport Nagar, Lucknow,
U.P., 226012

Factory Tour

Our state-of-the-art infrastructure is constructed over an extensive area and is divided into various departments like production unit, quality inspection, sales and marketing, etc. These segregated units work in close-synchronization for providing best quality products within the committed time frame. Our infrastructure is regularly upgraded to ensure trouble-free business operations. In our team, we have adroit team of personnel who have great professional acumen and rich industry experience. Different seminars and training sessions are also conducted for our team members that help them in updating their knowledge according to the current developments in the market.



Front Desk



Driver Manufacturing Unit



Pcb Manufacturing Unit



Reflow Oven



Powder Coating Booth



Powder Coating Oven



Wire Cutting & Stripping



Pad Printing



Laser Printing



Repairing Unit

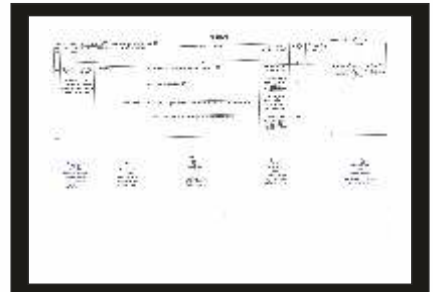
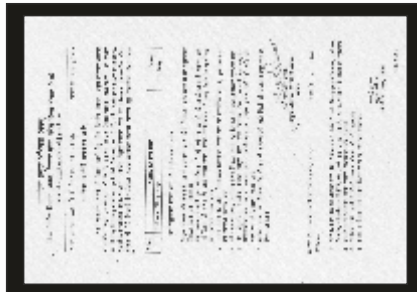
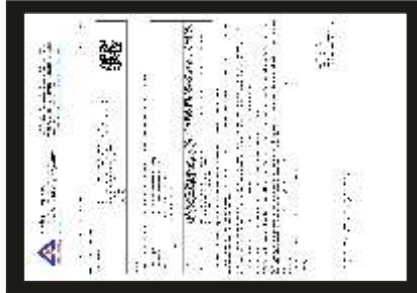


Testing Unit



Product Display

CERTIFICATES



OUR PRESTIGIOUS CUSTOMERS



And many more ...

Hi-WAY SEMI INTEGRATED SOLAR STREET LIGHT



Product Advantages & Features :

- ✘ Easy Installation
- LED High Lumen LED
- ☂ Extremely Waterproof
- ☀ High Quality Solar Panels
- 💡 Lights Up All Night

Application Places :

Construction of

- Courtyards
- Bridges
- Main Roads
- Rural Roads

PRODUCT PARAMETERS

| | |
|------------------------|----------------------------------|
| LED Lamp : | 60 pcs 2835LED 3000k-6500k |
| Solar Panel : | 6V 35W, Monocrystalline |
| Battery Type : | Lithium-Ion 3.2V 36000MAH |
| Charging Time : | 3-5H |
| Working Time : | 15-16H |
| Material : | Aluminium |
| Lamp Size : | 540X250mm |
| Install Height : | 6-8 m |
| Panel Size : | 580x350mm |
| Warranty : | 2 years |
| Outside Package Size : | 41.5x59x13.5cm 1pcs/ctn 9.2kg |

Hi-WAY INTEGRATED SOLAR STREET LIGHT



350m²

Wide angle
lighting cover

220°

Wide angle
lighting cover

Product Advantages & Features :

-  Easy Installation
-  High Lumen LED
-  Extremely Waterproof
-  High Quality Solar Panels
-  Lights Up All Night

PRODUCT PARAMETERS

| | | | |
|------------------------|--------------------------------|------------------------------|------------------------------|
| LED Lamp : (5730 SMD) | 360pcs 3000k-6500k | 480pcs 3000k-6500k | 600pcs 3000k-6500k |
| Solar Panel : | 6V 20W, Monocrystalline | 6V 25W, Monocrystalline | 6V 30W, monocrystalline |
| Battery Type : | Lithium-Ion 3.2V15AH | Lithium-Ion 3.2V20AH | Lithium-Ion 3.2V25AH |
| Charging Time : | 4-6H | 4-6H | 4-6H |
| Working Time : | ≥12H | ≥12H | ≥12H |
| Material : | ABS | ABS | ABS |
| Lamp Size : | 477X362X66.5mm | 623X362X66.5mm | 706X362X66.5mm |
| Solar Panel Size : | 335x360mm | 335x510mm | 335x590mm |
| Lighting Area : | 180m ² | 270m ² | 350m ² |
| Warranty : | 2 Years | 2 Years | 2 Years |
| Outside Package Size : | 66x47x50.5cm 8pcs/ctn26.8kg | 50x47x65cm 6pcs/ctn26.6kg | 47x42x73cm 8pcs/ctn26.8kg |

Hi-WAY SOLAR STREET LIGHT WITH CCTV CAMERA



PRODUCT DESCRIPTION

| LED Wattage | 20W | 30W | 40W | 50W | 60W | 80W | 100W | 120W |
|---|--|------------------------------------|------------------------------------|------------------------------------|------------------------------------|------------------------------------|------------------------------------|------------------------------------|
| Solar Panel Wattage | 60W | 75W | 100W | 120W | 150W | 180W | 200W | 250W |
| Battery Capacity | 12.8V/24Ah | 12.8V/30Ah | 12.8V/ 36Aah | 12.8V/ 42Ah | 12.8V/ 48Ah | 12.8V/60Ah | 12.8V/72Ah | 12.8V/78Ah |
| Charge Controller Capacity | 10Amp Microcontroller Based Driver | 10Amp Microcontroller Based Driver | 10Amp Microcontroller Based Driver | 10Amp Microcontroller Based Driver | 10Amp Microcontroller Based Driver | 10Amp Microcontroller Based Driver | 10Amp Microcontroller Based Driver | 20Amp Microcontroller Based Driver |
| LED Lumens/Watt | 130lm/w | 130lm/w | 130lm/w | 130lm/w | 130lm/w | 130lm/w | 130lm/w | 130lm/w |
| Charging Time | 7-8hrs | 7-8hrs | 7-8hrs | 7-8hrs | 7-8hrs | 7-8hrs | 7-8hrs | 7-8hrs |
| Backup Time | 2 Day | 2 Day | 2 Day | 2 Day | 2 Day | 2 Days | 2 Days | 2 Days |
| Protection | All Protection Available | | | | | | | |
| Dimming System | Inbuilt with system | | | | | | | |
| CCTV Camera | 4G CCTV 2Mega Pixel Camera, Video Recording Facility, 7 to 30 Days recording facility, Wifi and 4G Sim supported facility, mobile application facility, we can access camera any time and anywhere in world, motion sensor facility available in camera. | | | | | | | |
| IP67 Protection | All systems are IP67 protected | | | | | | | |
| Panel Structure, MS Clamp, Nut Bolt & Accessories | Providing with all systems | | | | | | | |
| Pole | 5 to 6 Meter GI Pole (76MM Outer Dia) | | | | | 6 to 9 Meter (76MM Outer Dia) | | |

Hi-WAY SOLAR LED HIGH MAST LIGHT



PRODUCT DESCRIPTION

| LED Wattage | 80W | 100W | 160W | 200W | 240W | 300W | 400W | 600W |
|---|--|---|---|--|--|--|---|-----------------|
| LED Luminary | 4no 20W | 4no 25W | 4no 40W | 4no 50W | 4no 60W | 4no 75W | 4no 100W | 4no 150W |
| Solar Panel Wattage | 4no. 40W | 4no. 50W | 4no. 60W | 4no. 75W | 4no. 100W | 4no 120W | 4no 150W | 4no 200W |
| Battery Capacity | 4no. 12.8V/12Ah | 4no. 12.8V/18Ah | 4no. 12.8V/24Ah | 4no. 12.8V/30Ah | 4no 12.8V/ 36Ah | 4no 12.8V/ 42Ah | 4no 12.8V/ 54Ah | 4no 12.8V/ 72Ah |
| Charge Controller Capacity | 4no. 6Amp Microcontroller based driver | 4no. 8Amp Microcontroller based driver | 4no. 8Amp Microcontroller based driver | 4no. 8Amp Microcontroller based driver | 4no. 10Amp Microcontroller based driver | 4no. 10Amp Microcontroller based driver | 4no. 10Amp MPPT | 4no. 20Amp MPPT |
| LED Driver Efficacy | 98% Efficacy in All Driver | | | | | | | |
| Charge Controller Function | 1)Auto On/Off (2)Battery low cut off and dod at that point (3) Battery over charging protection (4) Working temperature(-10 degree centigrade to +55 degree centigrade) (5) Light coverage 120 degree. | | | | | | | |
| Protection | Open circuit, Reverse Protection, Low Battery Protection, Over Charging Protection, Deep Discharge Protection, Reverse Polarity, Reverse Flow protection, Over Load Protection. | | | | | | | |
| LED Lumens/Watt | 130lm/w | | | | | | | |
| Charging Time | 7-8hrs | | | | | | | |
| Backup Time | 2 Day | | | | | | | |
| Pole | 6 Meter GI Pole(114mm OD) | | | 7 Meter Octagonal Pole (70mm upper dia 130mm Bottom dia) | | | 8Meter or 9Meter Octagonal Pole (70mm upper dia 130mm Bottom dia) | |
| Baseplate | 200mm X 200mm X 12mm Thickness | | | | | | | |
| Dimming System | Inbuilt with system | | | | | | | |
| IP67 Protection | All systems are IP67 protected | | | | | | | |
| Panel Structure, Foundation Bolt Light Arm, Nut Bolt etc. | Providing with all systems | | | | | | | |

Hi-WAY SOLAR UFO LIGHTS



Product Advantages & Features :

-  Easy Installation
-  High Lumen LED
-  Extremely Waterproof
-  High Quality Solar Panels
-  Lights Up All Night

PRODUCT DESCRIPTION

| | | | | | | |
|----------------------|---------------------------|---------------------------|---------------------------|---------------------------|--------------------------|----------------------------|
| Power W | 300W | 500W | 500W | 500W | 1000W | 2000W |
| Solar panel | 6V 15W | 6V 25W | 6V 25W | 6V 25W | 6V 25W | 6V 25W |
| Battery(3.2V) | 3.2V 15AH | 3.2V 20AH | 3.2V 20AH | 3.2V 20AH | 3.2V 20AH | 3.2V 20AH |
| LED Qty | 240PCS | 400PCS | 600PCS | 840PCS | 834PCS | 908PCS |
| Lumens lm | 130lm/w | | | | | |
| Beam angle | 120° | | | | | |
| Working time | 12-15H | | | | | |
| Material | ABS | | | | | |
| Lamp size | 420*420*125 | 600*600*110mm | 600*600*110mm | 600*600*110mm | 550*550*65mm | 550*550*135mm |
| G.W kg | 2.88KG/CTN | 4.6KG/CTN | 4.6KG/CTN | 4.6KG/CTN | 5KG/CTN | 5KG/CTN |
| Outer box | 425*140*425mm 1PCS/CTN | 605*115*605mm 1PCS/CTN | 605*115*605mm 1PCS/CTN | 605*115*605mm 1PCS/CTN | 550*555*70mm 1Pcs/Ctn | 565*565*145mm 1 PCS/CTN |






Hi-WAY SOLAR GARDEN/ GATE LIGHTS



Product parameters

| | | |
|-----------------------|---------------------------|-------------------------------|
| LED Lamp: | 32PCS 2835SMD | 48PCS 2835SMD |
| Solar Panel: | 6V 2W, Polycrystalline | 6V 3W, Monocrystalline |
| Battery Type: | 2000MAH 18650 LI-ION | 2500MAH 18650 LI-ION |
| Charging time: | 4-6H | 4-6H |
| Working time: | 12-15H | 12-15H |
| Material: | ABS/PC | ABS/PC |
| Lamp size: | 186*186*137mm | 260*260*179mm |
| LED : | 3000K/4500K/6500K | 3000K/4500K/6500K |
| Panel size: | 104*104mm | 145*145mm |
| Warranty: | 2 years | 2 years |
| Outside package size: | 36PCS/CTN 58*58*58.5cm | 16PCS/CTN 75.5*53.5*54.5cm |

Product Advantages & Features :

-  **Easy Installation**
-  **High Lumen LED**
-  **Extremely Waterproof**
-  **High Quality Solar Panels**
-  **Lights Up All Night**

Product parameters

| | | | |
|-----------------------|--|--|--|
| LED Lamp: | 28PCS SMD | 28PCS SMD | 28PCS SMD |
| Solar Panel: | 3W, Polycrystalline | 3W, Polycrystalline | 3W, Polycrystalline |
| Battery Type: | 2800MAH 18650 LI-ION battery | 2800MAH 18650 LI-ION battery | 2800MAH 18650 LI-ION battery |
| Charging time: | 4-6H | 4-6H | 4-6H |
| Working time: | 12-15H | 12-15H | 12-15H |
| Material: | ABS | ABS | ABS |
| Lamp size: | H 270 *W 170mm | H 255 *W 170mm | H 510 *W 170mm |
| LED : | RGB | RGB | RGB |
| Panel size: | 125*125mm | 125*125mm | 125*125mm |
| Warranty: | 2 years | 2 years | 2 years |
| Outside package size: | 53.5*53.5*64.5cm 27Pcs/Ctn 16.8kg/Ctn | 53.5*53.5*64.5cm 27Pcs/Ctn 16.8kg/Ctn | 53.5*53.5*64.5cm 27Pcs/Ctn 16.8kg/Ctn |

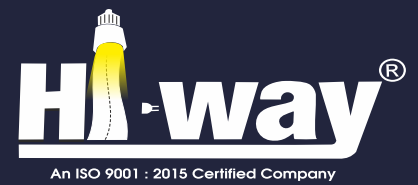
Hi-WAY SOLAR HOME LIGHT SYSTEM



PRODUCT DESCRIPTION

| | | | | |
|-------------------|---|---|---|---|
| LED BULB | 3no. 2W LED bulb with 3mtr wire and on/off switch | 3no. 3W LED bulb with 3mtr wire and on/off switch | 2no. 3W LED bulb with 3mtr wire and on/off switch | 3no. 5W LED bulb with 3mtr wire and on/off switch |
| FAN | NA | NA | 12W DC Table Fan | NA |
| MOBILE CHARGING | USB Port available with mobile charging lead(common in all systems) | | | |
| CHARGE CONTROLLER | Providing 5Ampier inbuilt charge controller with all systems | | | |
| PROTECTION | Battery over charging protection, battery deep discharging protection, short circuit protection (Common in all systems) | | | |
| BATTERY | 7.4V/2200mah Li-ion | 7.4V/4400mah Li-ion | 12.8V/6Ah Lipo4 | 12.8V/6Ah Lipo4 |
| SOLAR PANEL | 5W Poly Panel with 4meter wire | 5W Poly Panel with 4meter wire | 20W Poly Panel with 4meter wire | 10W Poly Panel with 4meter wire |
| AC ADAPTOR | Providing with all systems(Additional charging option) | | | |
| CHARGING TIME | 6 to 7 Hours charging time for all system | | | |
| BACKUP | Providing 4 to 5hrs backup with all systems on full load | | | |
| CONTROL BOX | ABS Plastic Body | ABS Plastic Body | MS Box with powder coated | MS Box with powder coated |
| WARRANTY | Providing One Year Warranty with All Systems | | | |

Hi-WAY SOLAR DUSTBIN

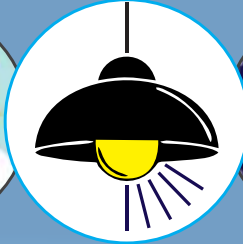


- CUSTOM MODEL DESIGN
- FACE RECOGNITION
- OVERLOAD ALARM
- INTELLIGENT CLASSIFICATION
- INTELLIGENT POSITIONING
- RESOURCE RECYCLING
- REMOTE CONTROL
- SMOKE ALARM
- VOICE PROMPT
- AI CONTROL
- INDUCTIVE LID OPENING
- WIFI SHARING
- DATA ANALYSIS
- MOBILE PHONE CHARGING
- AUXILLARY LIGHTING
- SOLAR CHARGING

Hi-WAY DAY NIGHT SENSOR



Turns OFF Automatically
During Day Time



Turns ON Automatically
During Night Time



APPLICATIONS



Pathways
in Buildings
& Hotels



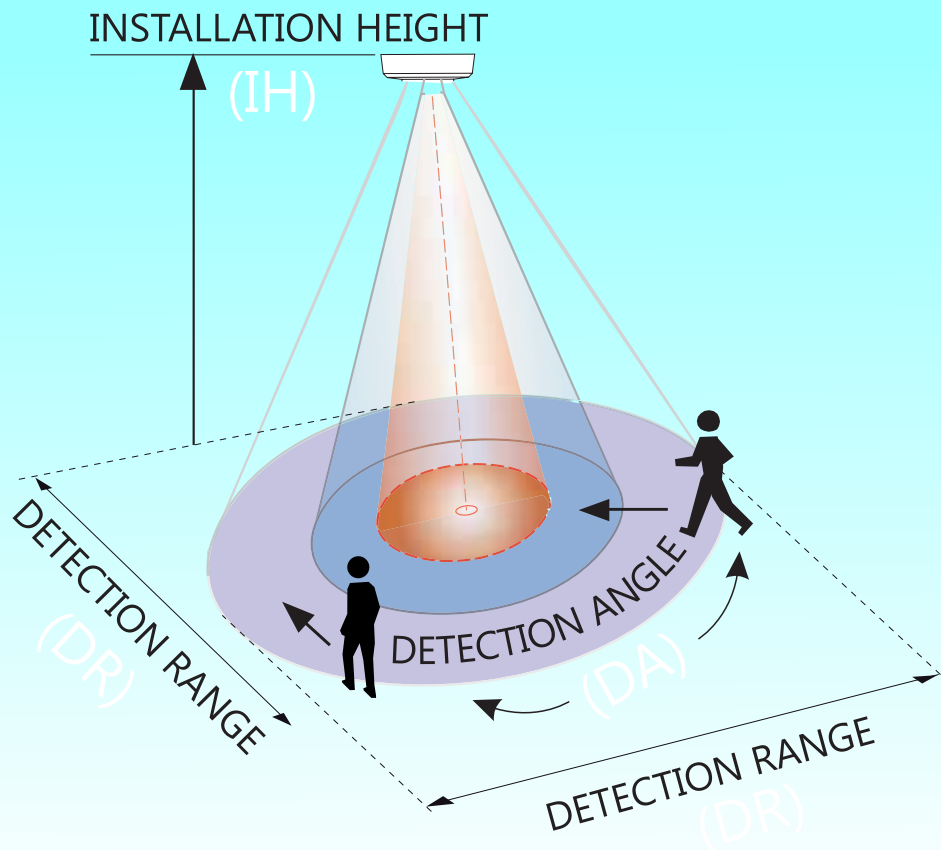
Main Roads
& Street Lights



Gardens
& Lawns

| | |
|---------------------|------------------------|
| Ambient Temperature | -20~+40°C |
| Ambient Light | <2-100LUX (Adjustable) |
| Power Consumption | <0.5W |
| Frequency | 50 - 60 Hz. |
| Load Capacity | 20 A. |

Hi-WAY PIR INFRARED MOTION SENSOR



APPLICATIONS



Open plan office areas



Corridors



Individual cabins



Reception/ lobby



Huddle / waiting rooms



| IH | DA | DR |
|-----------|------|-------|
| 2.2-4 Mtr | 360° | 8 Mtr |

| | |
|---------------------|--------------------------|
| Working Temperature | ~40°C |
| Ambient Light | 3-2000 lux (Adjustable) |
| Working Humidity | <93%RH |
| Time-Delay | 5 Sec-5 Min (Adjustable) |
| Load Capacity | 800W (LED LOAD) |
| Size (L x W x H) mm | 55 x 55x 65 |

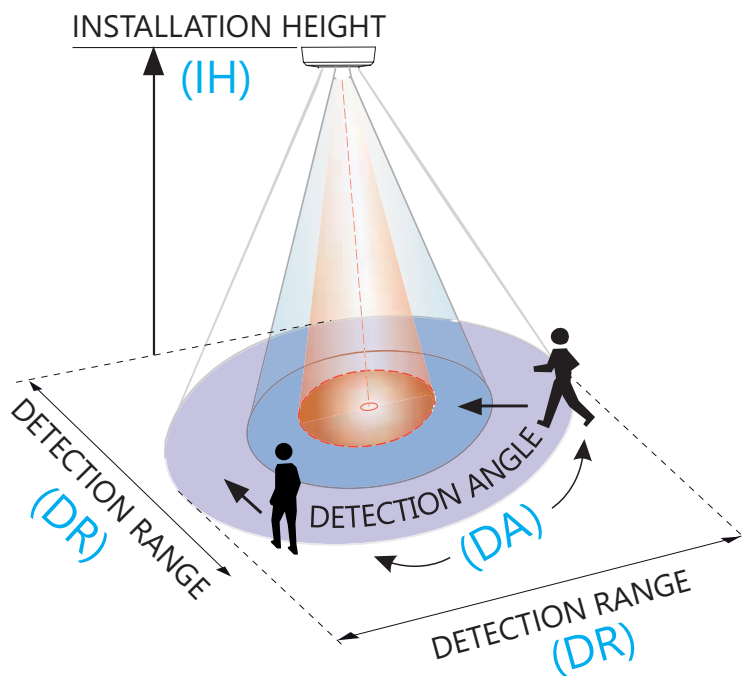
Hi-WAY MICROWAVE RADAR MOTION SENSOR



SOURCING 220-240V AC

DETECTION SPEED 0.6-1.5 MTR/SEC

POWER CONSUMPTION <0.2-0.9W



APPLICATIONS



Open plan office areas



Corridors



Individual cabins



Reception/ lobby



Huddle / waiting rooms

| IH | DA | DR |
|-----------|------|---------------|
| Max 4 Mtr | 360° | 1-7 Mtr (Adj) |

| | |
|---------------------|---------------------------|
| Working Temperature | ~85°C |
| Ambient Light | 3-50 lux (Adjustable) |
| Working Humidity | <93%RH |
| Time-Delay | 5 Sec-30 Min (Adjustable) |
| Load Capacity | 400W (LED LOAD) |
| Size (L x W x H) mm | 77 x 36 x 28 |

Hi-WAY FURNITURE SENSOR



APPLICATIONS



Double Door
Cabinet



Drawer

Usage

Bedroom, Wardrobe, Cabinet, Hotel

Function

Single Door Light sensor

Switch size

4.5 x 4.5 x 1.2 cm

Length

USB: 30cm / wire rod: 10cm

Wireless Control distance

10M

Size Receiver

3.4 x 1cm

Function

Remotely turn off the lights when a magnet is detected, turn on the lights remotely when no magnet is detected.

Hi-WAY ARCHITECTURAL LED FLOOD LIGHT



Power :

9W/12W/18W/24W/36W/48W

IP Rating :

IP65

Material :

Aluminum + Tempered Glass

Workmanship : Glue Waterproofing

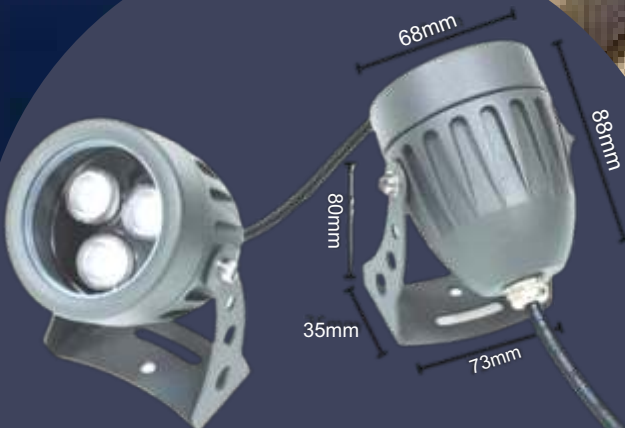
Light Color :

Yellow/Warm/White/RGB/RGBW

Usage Scenario :

**Architectural Lighting,
Landscape Lightning, etc.**

Hi-WAY ARCHITECTURAL LED SMALL SPOT LIGHT



Power :

3W/6W/9W/12W

IP Rating :

IP65

Material :

Aluminum + Tempered Glass

Workmanship : Glue Waterproofing

Light Color :

Yellow/Warm/White/RGB/RGBW

Usage Scenario :

Bridges, Parks, Squares, etc.

Hi-WAY ARCHITECTURAL LED SMALL SPOT LIGHT



Power :

4*2W/6*2W/12*3W

IP Rating :

IP65

Material :

Aluminum + Tempered Glass

Workmanship : Glue Waterproofing

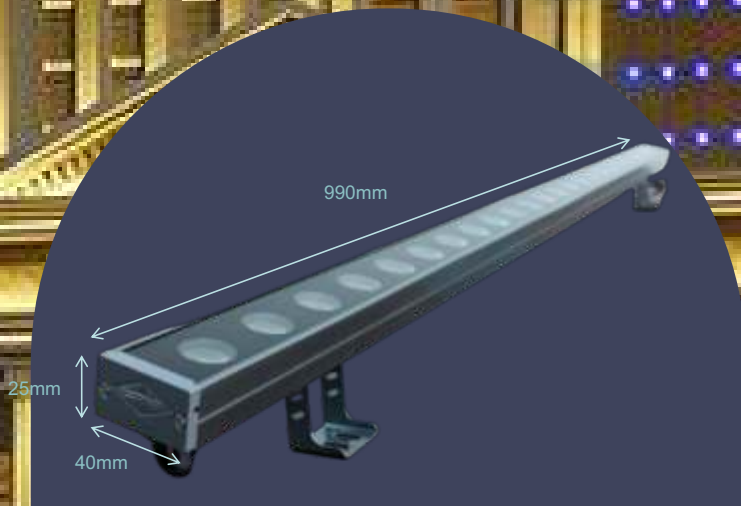
Light Color :

Yellow/Warm/White/RGB/RGBW

Usage Scenario :

Bridges, Parks, Squares, etc.

Hi-WAY ARCHITECTURAL LED WALL WASHER



Power :

12W/18W/24W/36W/48W

IP Rating :

IP65

Material :

Aluminum + Tempered Glass

Workmanship : Glue Waterproofing

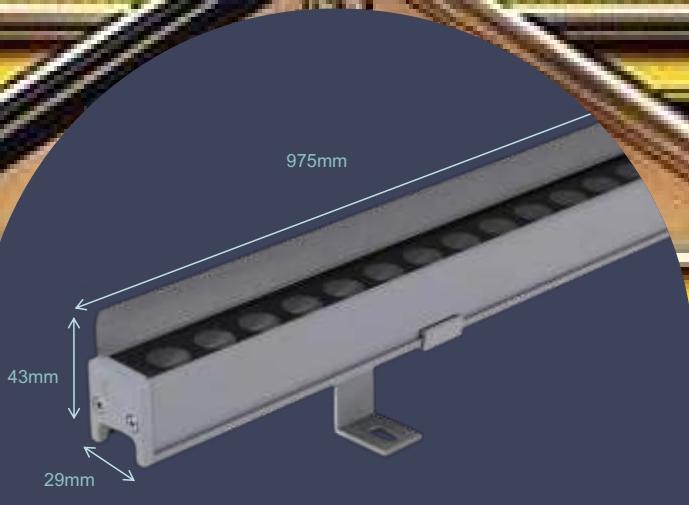
Light Color :

Yellow/Warm/White/RGB/RGBW

Usage Scenario :

**Bridges, Building Outline Lighting,
Scenic Area Lighting, etc.**

Hi-WAY ARCHITECTURAL LED WALL WASHER



Power :

12W/18W/24W/36W/48W

IP Rating :

IP65

Material :

Aluminum + Tempered Glass

Workmanship :

Glue Waterproofing

Light Color :

Yellow/Warm/White/RGB/RGBW

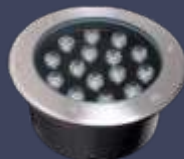
Usage Scenario :

**Bridges, Building Outline Lighting,
Scenic Area Lighting, etc.**

Hi-WAY ARCHITECTURAL LED UNDERGROUND



12W



15W



24W



36W

Power :

3W/6W/12W/18W/24W/36

IP Rating :

IP65

Material :

Aluminum + Tempered Glass

Workmanship :

Glue Waterproofing

Light Color :

Yellow/Warm/White/RGB/RGBW

Usage Scenario :

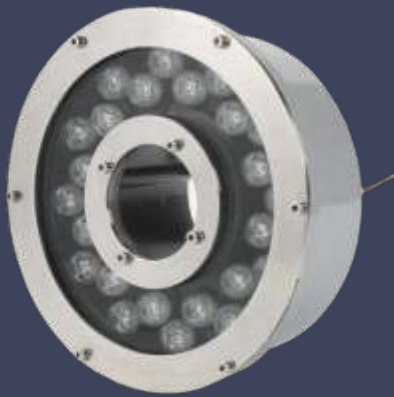
**Bridges, Building Outline Lighting,
Scenic Area Lighting, etc.**



Hi-WAY DMX CONTROLLER FLOOD LIGHT SERIES



Hi-WAY ARCHITECTURAL LED FOUNTAIN LIGHT



Power :

24W

IP Rating :

IP65

Material :

Stainless Steel + Tempered Glass

Workmanship :

Glue Waterproofing

Light Color :

Yellow/Warm/White/RGB/RGBW

Usage Scenario :

Fountain, Pool, Landscape, etc.

Hi-WAY ARCHITECTURAL LED UNDERWATER LIGHT



Power :

18W

IP Rating :

IP65

Material :

Stainless Steel + Tempered Glass

Workmanship :

Glue Waterproofing

Light Color :

Yellow/Warm/White/RGB/RGBW

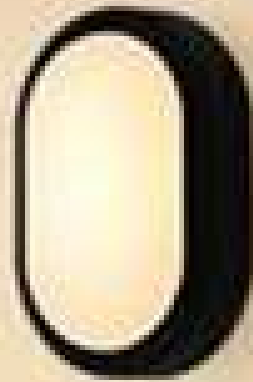
Usage Scenario :

Fountain, Pool, Landscape, etc.

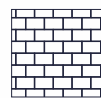
Hi-WAY BULK HEAD LIGHT SERIES



- **Quality tested LED technology ensure long life.**
- **Easy to fix on wall.**
- **Driver with high voltage protection, HPF High Efficiency Isolated.**
- **Surge protection upto 3.0KV.**
- **Lumens 110-130 Lm/W**



APPLICATIONS



WALL



CANOPY



PLAYGROUND



3000K
Warm White



4000K
Neutral White



6500K
White

| ITEM | SHAPE | DIMENSION (AxB) | MASTER PACKING |
|------|-------|-----------------|----------------|
| 10 W | ROUND | 167X78X61mm. | 50 |

Hi-WAY 2-WAY/4-WAY LIGHT SERIES



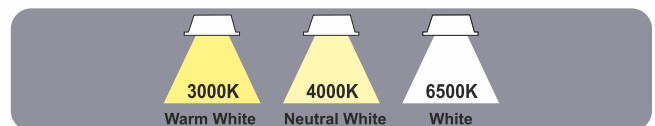
- **Quality tested LED technology ensuring long life.**
- **Surge protection upto 3.0 KV.**
- **Lumen 120-130Lm/W.**



APPLICATIONS



| | | | | |
|------------------------|----------------------------|---------------------|---------------------------|---------------------------|
| IP20 FIXTURE | <15% LESS THD | 3.0 KV SP | >0.9 HIGH PF | >80 HIGH CRI |
|------------------------|----------------------------|---------------------|---------------------------|---------------------------|



| ITEM | DIMENSION(LxBxH) | MASTER PACKING |
|-----------|------------------|----------------|
| 5 W 2 Way | 145 x 81 x 66 mm | 30 |



Hi-WAY PREMIUM GARDEN SPIKE LIGHT SERIES



- **Quality tested LED technology ensuring long life.**
- **Surge protection upto 3.0 KV.**
- **Lumen 120-130Lm/W.**



APPLICATIONS



GARDEN



DECORATION



LANDSCAPE



PLAYGROUND

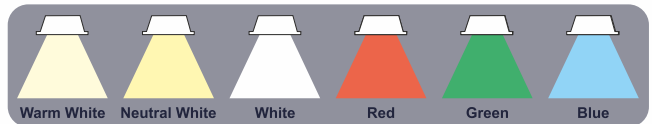
IP20
FIXTURE

<15%
LESS THD

3.0
KV SP

>0.9
HIGH PF

>80
HIGH CRI



| ITEM | DIMENSION (AxB) | MASTER PACKING |
|------------------|-----------------|----------------|
| 5 W Garden Light | 60 x 70 mm | 50 |

Hi-WAY LANDSCAPING LIGHTS SERIES



ITEM NAME : BOLLARD MUSHROOM
MATERIAL : POLYCARBONATE BODY
BODY COLOUR : BLACK
LED COLOUR : WHITE / WARM WHITE

| WIDTH | HEIGHT | WATT |
|-------|--------|------|
| 220mm | 510mm | 12W |



ITEM NAME : BOLLARD LIGHT 2 LEG
MATERIAL : POLYCARBONATE & AULINIUM BODY
BODY COLOUR : GREY POWDER COATED
LED COLOUR : WHITE / WARM WHITE

| WIDTH | HEIGHT | WATT |
|-------|--------|------|
| 155mm | 450mm | 12W |
| 155mm | 600mm | 12W |
| 155mm | 900mm | 12W |



ITEM NAME : BOLLARD LIGHT 4 LEG
MATERIAL : POLYCARBONATE & AULINIUM BODY
BODY COLOUR : GREY POWDER COATED
LED COLOUR : WHITE / WARM WHITE

| WIDTH | HEIGHT |
|-------|--------|
| 125mm | 450mm |
| 125mm | 600mm |
| 125mm | 900mm |



ITEM NAME : BOLLARD CONICAL
MATERIAL : POLYCARBONATE & AULINIUM BODY
BODY COLOUR : GREY POWDER COATED
LED COLOUR : WHITE / WARM WHITE

| WIDTH | HEIGHT | WATT |
|-------|--------|------|
| 120mm | 450mm | 12W |
| 120mm | 600mm | 12W |
| 120mm | 900mm | 12W |



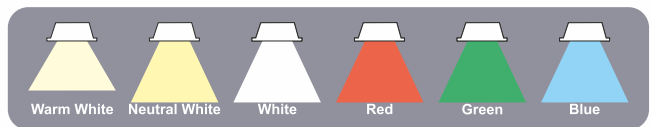
ITEM NAME : BOLLARD CONICAL
MATERIAL : POLYCARBONATE & AULINIUM BODY
BODY COLOUR : GREY POWDER COATED
LED COLOUR : WHITE / WARM WHITE

| WIDTH | HEIGHT | WATT |
|-------|--------|------|
| 150mm | 450mm | 12W |
| 150mm | 600mm | 12W |
| 150mm | 900mm | 12W |

Hi-WAY FLOOD LIGHT SERIES



- Premium look with aluminum PDC housing
- Quality tested LED technology ensuring long life
- Lumens 120-130Lm/W



| ITEM | BODY COLOUR | LAMP POWER | LAMP FLUX |
|-----------|-------------|------------|-----------|
| HWFL-30W | WHITE/GREY | 30W | 3600LM |
| HWFL-50W | WHITE/GREY | 50W | 6000LM |
| HWFL-100W | WHITE/GREY | 100W | 12000LM |
| HWFL-150W | WHITE/GREY | 150W | 18000LM |
| HWFL-240W | WHITE/GREY | 240W | 24000LM |

**DOB FLOOD
(INDIAN MAKE)**

**RGB FLOOD
WITH REMOTE**

**2 in 1 ALSO
AVAILABLE**

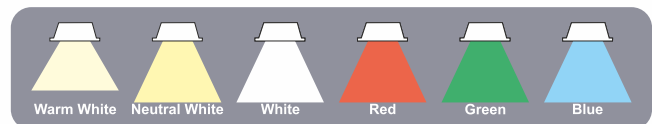
**DAY LIGHT SENSOR
ON REQUEST**

**MOTION SENSOR
ON REQUEST**

Hi-WAY DOB FLOOD LIGHT SERIES



- **Premium look with aluminum PDC housing**
- **Quality tested LED technology ensuring long life**
- **Lumens 120-130Lm/W**



| ITEM | BODY COLOUR | LAMP POWER | LAMP FLUX |
|-----------|-------------|------------|-----------|
| HWFL-30W | WHITE/GREY | 30W | 3600LM |
| HWFL-50W | WHITE/GREY | 50W | 6000LM |
| HWFL-100W | WHITE/GREY | 100W | 12000LM |
| HWFL-150W | WHITE/GREY | 150W | 18000LM |
| HWFL-240W | WHITE/GREY | 240W | 24000LM |

**DOB FLOOD
(INDIAN MAKE)**

**RGB FLOOD
WITH REMOTE**

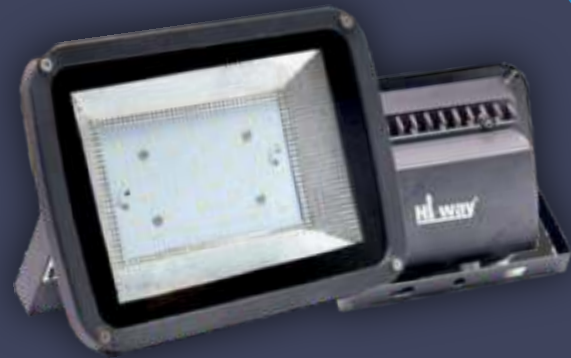
**2 in 1 ALSO
AVAILABLE**

**DAY LIGHT SENSOR
ON REQUEST**

**MOTION SENSOR
ON REQUEST**

Hi-WAY BACK CHOKE FLOOD LIGHT SERIES

- Premium look with aluminum PDC housing
- Reflect a clear optics for sharp light
- Quality tested LED technology ensuring long life
- Lumens 120-130Lm/W



TECHNICAL FEATURES

| | |
|--------------------------|---------------------|
| Led Chip Watt | : 0.5 WATT - 1 WATT |
| Housing Material | : Die+Alu+Glass |
| Reflector | : Alu/PC |
| Power Factor | : >0.9 |
| Colour Temperature | : 3000K/4000K/6500K |
| IP Grade | : IP65/IP66 |
| CRI | : RA>80 |
| Led Life Time | : 50000H |
| Serge Protector | : 6KV-8KV |
| Input Voltage | : AC 90V-320V |
| 440 V Protection | : For 48 Hours |
| Over Voltage Protection | : Above 320V |
| Lower Voltage Protection | : Below 90V |
| Driver Efficiency | : 90% |

APPLICATIONS



GARDEN



CANOPY



LANDSCAPE



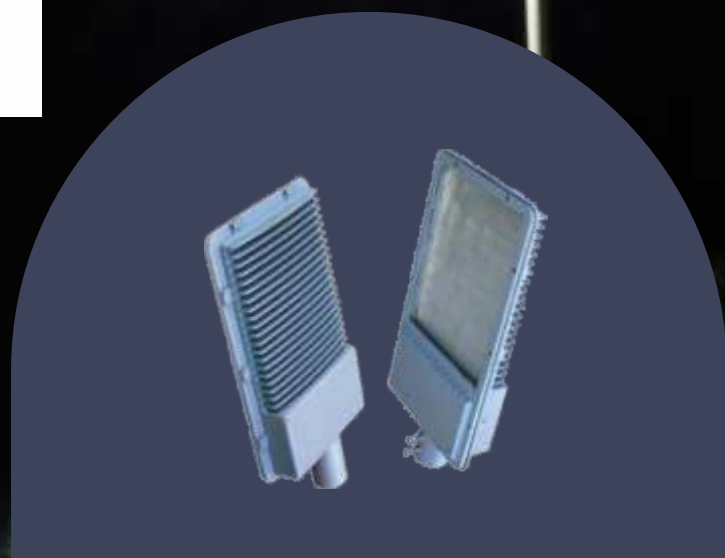
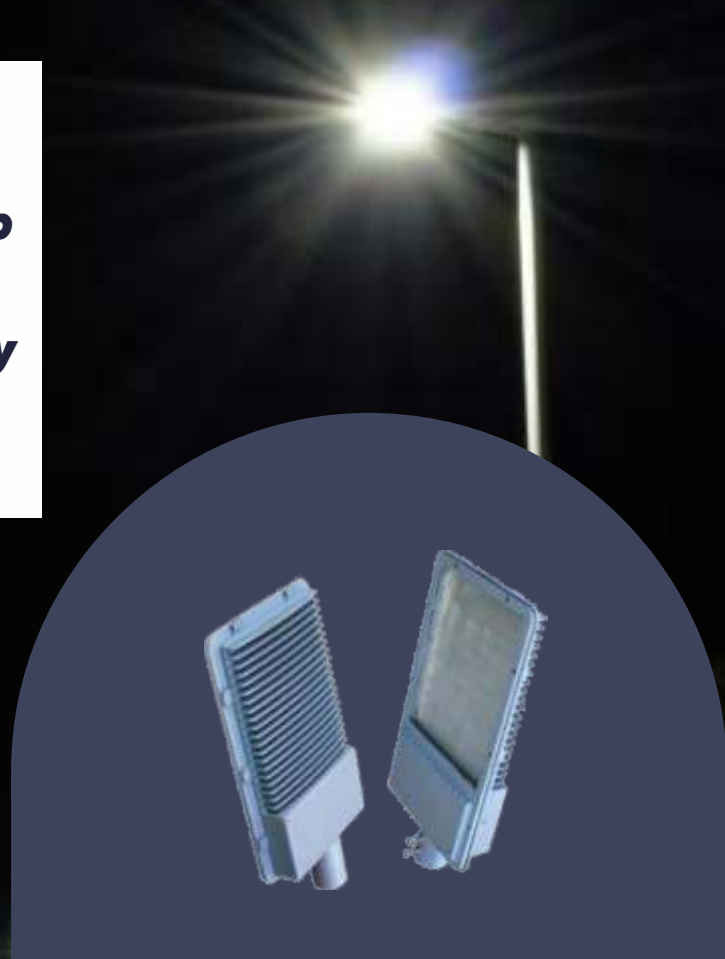
PLAYGROUND

| ITEM | BODY COLOUR | LAMP POWER | LAMP FLUX |
|------------|-------------|------------|-----------|
| HBCFL-250W | WHITE/GREY | 250W | 25000LM |
| HBCFL-300W | WHITE/GREY | 300W | 30000LM |
| HBCFL-350W | WHITE/GREY | 350W | 35000LM |
| HBCFL-400W | WHITE/GREY | 400W | 40000LM |
| HBCFL-500W | WHITE/GREY | 500W | 50000LM |

Hi-WAY STREET LIGHT SERIES



- Premium look with aluminum PDC housing
- Reflect a clear optics for sharp light
- Quality tested LED technology ensuring long life
- Lumens 120-130Lm/W



APPLICATIONS



GARDEN



HIGHWAY



LANDSCAPE



PLAYGROUND



TECHNICAL FEATURES

| | |
|--------------------------|---------------------|
| Led Chip Watt | : 0.5 WATT - 1 WATT |
| Housing Material | : Die+Alu+Glass |
| Reflector | : Alu/PC |
| Power Factor | : >0.9 |
| Colour Temperature | : 3000K/4000K/6500K |
| IP Grade | : IP65/IP66 |
| CRI | : RA>80 |
| Led Life Time | : 50000H |
| Surge Protector | : 6KV-8KV |
| Input Voltage | : AC 90V-320V |
| 440 V Protection | : For 48 Hours |
| Over Voltage Protection | : Above 320V |
| Lower Voltage Protection | : Below 90V |
| Driver Efficiency | : 90% |

| ITEM | BODY COLOUR | LAMP POWER | LAMP FLUX |
|----------|-------------|------------|-----------|
| HSL-24W | WHITE/GREY | 24W | 2640LM |
| HSL-30W | WHITE/GREY | 30W | 3300LM |
| HSL-50W | WHITE/GREY | 50W | 5500LM |
| HSL-60W | WHITE/GREY | 60W | 6000LM |
| HSL-75W | WHITE/GREY | 75W | 7500LM |
| HSL-100W | WHITE/GREY | 100W | 11000LM |
| HSL-120W | WHITE/GREY | 120W | 12000LM |
| HSL-150W | WHITE/GREY | 150W | 16500LM |
| HSL-200W | WHITE/GREY | 200W | 20000LM |
| HSL-250W | WHITE/GREY | 250W | 25000LM |

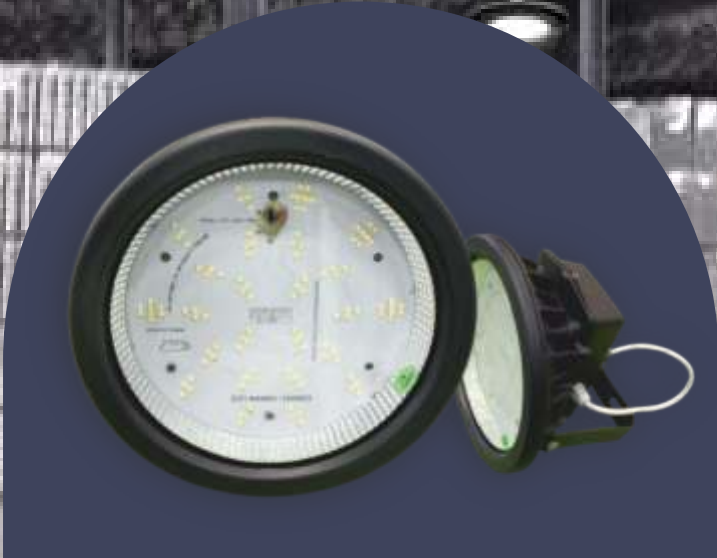
DAY LIGHT SENSOR
ON REQUEST

MOTION SENSOR
ON REQUEST

Hi-WAY HIBAY LIGHT UFO SERIES



- **Premium look with aluminum PDC housing**
- **Reflect a clear optics for sharp light**
- **Quality tested LED technology ensuring long life**
- **Lumens 120-130Lm/W**



TECHNICAL FEATURES

| | |
|--------------------------|---------------------|
| Led Chip Watt | : 0.5 WATT - 1 WATT |
| Housing Material | : Die+Alu+Glass |
| Reflector | : Alu/PC |
| Power Factor | : >0.9 |
| Colour Temperature | : 3000K/4000K/6500K |
| IP Grade | : IP65/IP66 |
| CRI | : RA>80 |
| Led Life Time | : 50000H |
| Serge Protector | : 6KV-8KV |
| Input Voltage | : AC 90V-320V |
| 440 V Protection | : For 48 Hours |
| Over Voltage Protection | : Above 320V |
| Lower Voltage Protection | : Below 90V |
| Driver Efficiency | : 90% |

| ITEM | BODY COLOUR | LAMP POWER | LAMP FLUX |
|-----------|-------------|------------|-----------|
| HHUF-120W | WHITE/GREY | 120W | 12000LM |
| HHUF-150W | WHITE/GREY | 150W | 16500LM |
| HHUF-180W | WHITE/GREY | 180W | 18000LM |
| HHUF-250W | WHITE/GREY | 250W | 25000LM |

**DAY LIGHT SENSOR
ON REQUEST**

**MOTION SENSOR
ON REQUEST**

2 IN 1 ALSO AVAILABLE

Hi-WAY AC/DC INVERTER BULB SERIES



- **Quality tested LED technology ensure long life.**
- **Surge protection upto 3.0KV.**
- **Lumen 120-130 Lm/W**
- **Driver Based Bulb.**



APPLICATIONS



| | | | | |
|-----------------|------------------|--------------|-----------------|-----------------|
| IP20 FIXTURE | <15% LESS THD | 3.0 KV SP | >0.9 HIGH PF | >80 HIGH CRI |
|-----------------|------------------|--------------|-----------------|-----------------|

| ITEM | MASTER PACKING |
|-----------------|----------------|
| 12 W Bulb Light | 50 |

Hi-WAY AC/DC LED STREET LIGHT



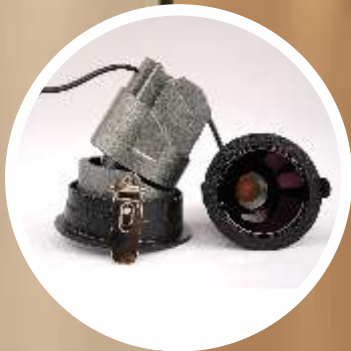
PRODUCT DESCRIPTION

| AC Section Details | | DC Section Details | |
|---------------------|--|---|-----------------|
| LED Wattage | 30WATT | LED Wattage | 15 watt Power |
| Power Factor | 95 | Battery | 12.8V/6Ah Lipo4 |
| THD | <10 | Backup | 5 to 6 hours |
| Input | 140-265V | Lumen | 1850 lu(Approx) |
| Surge Protection | 4.5KVA High Voltage cut off 320V Low voltage cut off 120V | Low Battery cut off | 11V |
| Dimming | 50% | DC Max charging | 5Ampier |
| Efficiency | 90% | Optics as per site requirement High battery cut off | 14.4V |
| Lumen | 3650 lu(Approx) | Low battery indicator | Red |
| Color temp | 5700 – 6300K | Charging battery indicator | Green |
| Dust to down by LDR | | | |

Hi-WAY PREMIUM COB DOWNLIGHT SERIES



- **Quality tested LED technology ensure long life.**
- **Driver with high voltage protection, HPF High Efficiency Isolated.**
- **Surge protection upto 3.0KV.**
- **Lumens 120-130 Lm/W**
- **Aluminium Pressure Die-cast housing.**



APPLICATIONS



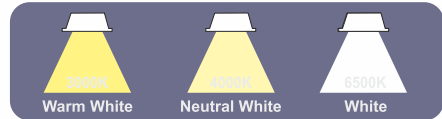
BED ROOM



LIVING ROOM



OFFICE



IP20
FIXTURE

<15%
LESS THD

3.0
KV SP

>0.9
HIGH PF

>80
HIGH CRI

| ITEM | SHAPE | DIMENSION (AxB) | CUT OUT © | MASTER PACKING |
|------------|-------|-----------------|-----------|----------------|
| 3W COB SL | RD/SQ | 68 x 68 mm | 55 mm | 60 |
| 6W COB SL | RD/SQ | 85 x 85 mm | 75 mm | 50 |
| 9W COB SL | RD/SQ | 85 x 85 mm | 75 mm | 50 |
| 16W COB SL | RD/SQ | 140 x 140 mm | 120 mm | 40 |
| 24W COB SL | RD/SQ | 140 x 140 mm | 120 mm | 40 |
| 30W COB SL | RD/SQ | 160 x 160 mm | 140 mm | 20 |
| 50W COB SL | RD/SQ | 160 x 160 mm | 140 mm | 20 |

*COB



Hi-WAY PREMIUM MAGNETIC TRACK LIGHT SERIES



- **Quality tested LED technology ensure long life.**
- **Driver with high voltage protection.**
- **Surge protection upto 3.0KV.**
- **Lumens 110-120 Lm/W**
- **Aluminium Preassure Die-cast housing.**



APPLICATIONS



BED ROOM



LIVING ROOM



OFFICE



3000K
Warm White



4000K
Neutral White



6500K
White

IP20

FIXTURE

<15%

LESS THD

3.0

KV SP

>0.9

HIGH PF

>80

HIGH CRI

Hi-WAY PREMIUM SURFACE COB DOWNLIGHT SERIES



- **Quality tested LED technology ensure long life.**
- **Easy to fix on surface.**
- **Driver with high voltage protection.**
- **Surge protection upto 3.0KV.**
- **Lumens 120-130 Lm/W**
- **Aluminium Pressure Die-cast housing.**



APPLICATIONS



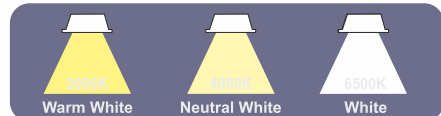
BED ROOM



LIVING ROOM



OFFICE



IP20
FIXTURE

<15%
LESS THD

3.0
KV SP

>0.9
HIGH PF

>80
HIGH CRI

| ITEM | SHAPE | DIMENSION (AxB) | MASTER PACKING |
|------------|-------|-----------------|----------------|
| 7W COB SC | Round | 54 x 65 mm | 60 |
| 12W COB SC | Round | 74 x 90 mm | 60 |
| 18W COB SC | Round | 94 x 105 mm | 60 |

*SC : SURFACE COB

Hi-WAY PREMIUM TRACK/WALL MOUNT SERIES



- **Driver with high voltage protection, HPF High Efficiency Isolated.**
- **Surge protection upto 3.0KV.**
- **Lumens 120-130 Lm/W**
- **Aluminum Pressure Die-cast Housing.**



APPLICATIONS



BED ROOM



LIVING ROOM



OFFICE



3000K
Warm White



4000K
Neutral White



6500K
White

IP20

FIXTURE

<15%

LESS THD

3.0

KV SP

>0.9

HIGH PF

>80

HIGH CRI

| ITEM | SHAPE | BASE SIZE (mm) | DIAMETER | MASTER PACKING |
|-----------|-------|------------------|--------------|----------------|
| 16W TL* | Round | 75 x 30 x 25 mm | 65 x 135 mm | 50 |
| 24W TL* | Round | 90 x 40 x 30 mm | 75 x 140 mm | 40 |
| 30W TL* | Round | 120 x 40 x 30 mm | 85 x 145 mm | 30 |
| 50W TL* | Round | 140 x 50 x 40 mm | 100 x 155 mm | 20 |
| 16W WM TL | Round | 70 x 70 mm | 65 x 135 mm | 50 |
| 24W WM TL | Round | 85 x 85 mm | 75 x 140 mm | 40 |
| 30W WM TL | Round | 90 x 90 mm | 85 x 145 mm | 30 |
| 50W WM TL | Round | 100 x 100 mm | 100 x 155 mm | 20 |

* Base Size (LXBXH)

Hi-WAY PREMIUM TRACK CHANNEL SERIES



- **Aluminum Pressure Die-cast Housing.**



| ITEM | BODY COLOUR | LENGTH (mm) | MASTER PACKING |
|----------|-------------|-------------|----------------|
| 1 Mtr TC | Black/White | 1000 mm | 30 |
| 2 Mtr TC | Black/White | 2000 mm | 30 |

Hi-WAY PROFILE HOUSING LIGHT SERIES



- **Quality tested LED technology ensure long life.**
- **Aluminum Pressure Die-cast Housing.**



APPLICATIONS



SHOWCASE



UNDER CABIN



CEILING



| ITEM | DIMENSION | MASTER PACKING |
|----------|------------|----------------|
| 1708 SF | 17 x 8 mm | 10 |
| 1708 Con | 17 x 8 mm | 10 |
| 2512 SF | 25 x 12 mm | 10 |
| 2512 CON | 25 x 12 mm | 10 |
| 3512 SF | 35 x 12 mm | 10 |
| 3512 CON | 35 x 12 mm | 10 |

Hi-WAY PREMIUM SMPS SERIES



- **Quality tested LED technology ensure long life.**
- **Driver with high voltage protection, HPF High Efficiency Isolated.**
- **Surge protection upto 3.0KV.**
- **Aluminum Pressure Die-cast Housing.**



| | | | | |
|------------------------|----------------------------|---------------------|---------------------------|---------------------------|
| IP20 FIXTURE | <15% LESS THD | 3.0 KV SP | >0.9 HIGH PF | >80 HIGH CRI |
|------------------------|----------------------------|---------------------|---------------------------|---------------------------|

| ITEM | MASTER PACKING |
|-------|----------------|
| 2AMP | 5 |
| 5AMP | 5 |
| 10AMP | 5 |

Hi-WAY LED STRIP LIGHT SERIES



- **Quality tested LED technology ensure long life.**
- **Lumen 120-130 Lm/W**



APPLICATIONS



SHOWCASE



UNDER CABIN



CEILING

COLORS AVAILABLE



FLEXIBLE LED STRIP LIGHT

| POWER | PRODUCT | LED PACKING | LED QTY/MTR | LOAD VOLTAGE | COLORS | PACKING | PCB WIDTH | IP RATING |
|-------|-----------|-------------|-------------|--------------|------------|---------|-----------|-----------|
| 8-10W | LED Strip | 2835 | 120D | 12V | All Colors | 5 Mtr | 8 mm | IP20 |
| 10W | LED Strip | 2835 | 120D | 24V | All Colors | 5 Mtr | 8 mm | IP20 |

Colors WW, NW, CW, Red, Green, Blue, Pink, Orange

FLEXIBLE LED STRIP COATED LIGHT

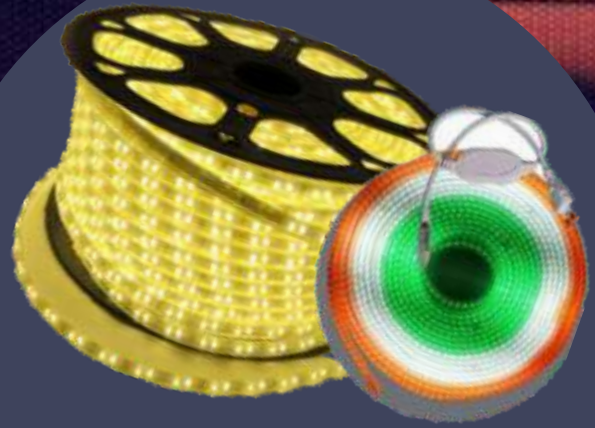
| POWER | PRODUCT | LED PACKING | LED QTY/MTR | LOAD VOLTAGE | COLORS | PACKING | PCB WIDTH | IP RATING |
|-------|-----------|-------------|-------------|--------------|------------|---------|-----------|-----------|
| 8-10W | LED Strip | 2835 | 120D | 12V | All Colors | 5 Mtr | 8 mm | IP65 |
| 10W | LED Strip | 2835 | 120D | 24V | All Colors | 5 Mtr | 8 mm | IP65 |

Colors WW, NW, CW, Red, Green, Blue, Pink, Orange

Hi-WAY LED ROPE LIGHT SERIES



- **Quality tested LED technology ensure long life.**
- **Lumen 120-130 Lm/W**



APPLICATIONS



SHOWCASE



UNDER CABIN



CEILING

| POWER | PRODUCT | LED PACKING | LED QTY/MTR | LOAD VOLTAGE | COLORS | PACKING | PCB WIDTH | IP RATING |
|-------|----------------|-------------|-------------|--------------|--------------------|--------------|-----------|-----------|
| 6W | LED Rope Light | 2835 | 60DD | 220V | WW, NW, W, R, G, B | 50/100Mtr8mm | 8mm | Ip65 |
| 10W | LED Rope Light | 2835 | 120DD | 220V | WW, NW, W, R, G, B | 50/100Mtr8mm | 8mm | Ip65 |
| 12W | LED Rope Light | 2835 | 120DD | 220V | WW, NW, W, R, G, B | 50/100Mtr8mm | 11mm | Ip65 |
| 10W | LED Rope Light | 2835 | 120DD | 220V | WW, NW, W, R, G, B | 50/100Mtr8mm | 12mm | Ip65 |
| 8W | LED Rope Light | 2835 | 120DD | 220V | WW&NW, Switch mode | 50/100Mtr8mm | 11mm | Ip65 |
| 8W | LED Rope Light | 5050 | 60DD | 220V | RGB, Switch mode | 50/100Mtr8mm | 11mm | IP65 |

Colors WW, NW, CW, Red, Green, Blue, Pink, Orange

Hi-WAY PREMIUM SLIM PANEL SERIES



- **Quality tested LED technology ensure long life.**
- **Driver with high voltage protection, HPF High Efficiency Isolated.**
- **Surge protection upto 3.0KV.**
- **Lumens 100-110 Lm/W**
- **Aluminium Pressure Die-cast housing.**



APPLICATIONS



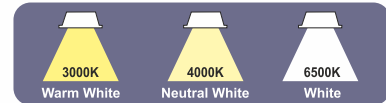
BED ROOM



LIVING ROOM



OFFICE



IP20
FIXTURE

<15%
LESS THD

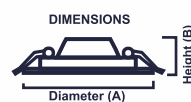
3.0
KV SP

>0.9
HIGH PF

>80
HIGH CRI

| ITEM | SHAPE | DIMENSION (AxB) | CUT OUT © | MASTER PACKING |
|--------|-------|-------------------|--------------|----------------|
| 4W SP | RD/SQ | 83 x 83 x 20 mm | 75x75 mm | 60 |
| 8W SP | RD/SQ | 120 x 120 x 20 mm | 105 x 105 mm | 50 |
| 15W SP | RD/SQ | 170 x 170 x 20 mm | 155 x 155 mm | 40 |
| 22W SP | RD/SQ | 225 x 225 x 20 mm | 205 x 205 mm | 30 |

*SP : SLIM PANEL



**3 IN 1 ALSO
AVAILABLE**

Hi-WAY ADJUSTABLE SLIM PANEL SERIES



- **Quality tested LED technology ensure long life.**
- **Driver with high voltage protection, HPF High Efficiency Isolated.**
- **Surge protection upto 3.0KV.**
- **Lumens 100-110 Lm/W**
- **Aluminium Pressure Die-cast housing.**



APPLICATIONS



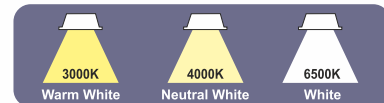
BED ROOM



LIVING ROOM



OFFICE



IP20
FIXTURE

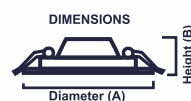
<15%
LESS THD

3.0
KV SP

>0.9
HIGH PF

>80
HIGH CRI

| ITEM | SHAPE | DIMENSION (AxB) | MASTER PACKING |
|----------------|--------|-----------------|----------------|
| 10W Adjustable | Round | 102 x 102 mm | 50 |
| 20W Adjustable | Round | 120 x 120 mm | 40 |
| 10W Adjustable | Square | 102 x 102 mm | 40 |
| 20W Adjustable | Square | 120 x 120 mm | 30 |



**ALSO AVAILABLE
IN SURFACE**

Hi-WAY PC SLIM PANEL SERIES

- **Quality tested LED technology ensure long life.**
- **Driver with high voltage protection, HPF High Efficiency Isolated.**
- **Surge protection upto 3.0KV.**
- **Lumens 100-110 Lm/W**
- **Polycarbonate housing.**



APPLICATIONS



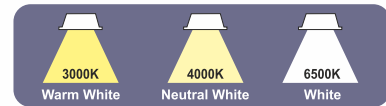
BED ROOM



LIVING ROOM



OFFICE



IP20
FIXTURE

<15%
LESS THD

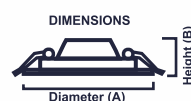
3.0
KV SP

>0.9
HIGH PF

>80
HIGH CRI

| ITEM | SHAPE | DIMENSION (AxB) | CUT OUT © | MASTER PACKING |
|--------|-------|-----------------|--------------|----------------|
| 8W SP | RD/SQ | 125 x 125 mm | 102 x 102 mm | 50 |
| 15W SP | RD/SQ | 145 x 145 mm | 127 x 127 mm | 50 |
| 22W SP | RD/SQ | 170 x 170 mm | 152 x 152 mm | 40 |

*SP : SLIM PANEL



**3 IN 1
ALSO AVAILABLE**

Hi-WAY PREMIUM DOWNLIGHTER SERIES



- **Quality tested LED technology ensure long life.**
- **Driver with high voltage protection, HPF High Efficiency Isolated.**
- **Surge protection upto 3.0KV.**
- **Lumens 120-130 Lm/W**
- **Aluminium Pressure Die-cast housing.**



APPLICATIONS



BED ROOM



LIVING ROOM



OFFICE



IP20
FIXTURE

<15%
LESS THD

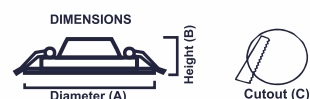
3.0
KV SP

>0.9
HIGH PF

>80
HIGH CRI

| ITEM | SHAPE | DIMENSION (AxB) | CUT OUT © | MASTER PACKING |
|--------|-------|-------------------|--------------|----------------|
| 12W DL | Round | 120 x 120 x 55 mm | 105 x 105 mm | 50 |
| 18W DL | Round | 150 x 150 x 55 mm | 135 x 135 mm | 40 |

*SP : SLIM PANEL



Hi-WAY 2X2 SLIM/SURFACE PANEL SERIES



- **Quality tested LED technology ensure long life.**
- **Easy to fix on surface.**
- **Driver with high voltage protection, HPF High Efficiency Isolated.**
- **Surge protection upto 3.0KV.**
- **Lumens 120-130 Lm/W**
- **Aluminium Pressure Die-cast housing.**

APPLICATIONS



BED ROOM



LIVING ROOM



OFFICE



| | | | | |
|------------------------|----------------------------|---------------------|---------------------------|---------------------------|
| IP20 FIXTURE | <15% LESS THD | 3.0 KV SP | >0.9 HIGH PF | >80 HIGH CRI |
|------------------------|----------------------------|---------------------|---------------------------|---------------------------|

| ITEM | SHAPE | DIMENSION (AxB) | CUT OUT © | MASTER PACKING |
|-------------|--------|-----------------|-----------------|----------------|
| 36W 2x2 SP | Square | 600 mm * 600 mm | 595 mm * 595 mm | 8 |
| 36W 2x2 SFP | Square | 600 mm * 600 mm | 595 mm * 595 mm | 8 |

*SF : SLIM PANEL / SFP : SURFACE PANEL

Hi-WAY PREMIUM BUTTON SPOTLIGHT SERIES



- **Quality tested LED technology ensuring long life.**
- **Surge protection upto 3.0KV.**
- **Lumen 120-130 Lm/W**



APPLICATIONS



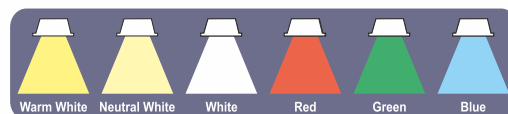
BED ROOM



LIVING ROOM



OFFICE



Warm White

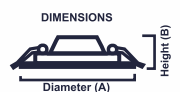
Neutral White

White

Red

Green

Blue



IP20
FIXTURE

<15%
LESS THD

3.0
KV SP

>0.9
HIGH PF

>80
HIGH CRI

| ITEM | SHAPE | SIZE | CUTOUT | MASTER PACKING |
|------|-------|------------|--------|----------------|
| 2 W | Round | 38 x 25 mm | 30 mm | 100 |
| 3 W | Round | 38 x 25 mm | 30 mm | 100 |

Hi-WAY PREMIUM SURFACE PANEL SERIES



- **Quality tested LED technology ensure long life.**
- **Easy to fix on surface.**
- **Driver with high voltage protection, HPF High Efficiency Isolated.**
- **Surge protection upto 3.0KV.**
- **Lumens 100-110 Lm/W**
- **Aluminium Pressure Die-cast housing.**



APPLICATIONS



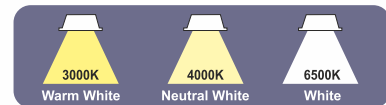
BED ROOM



LIVING ROOM



OFFICE



IP20
FIXTURE

<15%
LESS THD

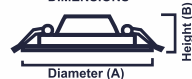
3.0
KV SP

>0.9
HIGH PF

>80
HIGH CRI

| ITEM | SHAPE | DIMENSION (AxB) | MASTER PACKING |
|--------|-------|-------------------|----------------|
| 4W SF | RD/SQ | 83 x 83 x 20 mm | 60 |
| 8W SF | RD/SQ | 120 x 120 x 36 mm | 50 |
| 15W SF | RD/SQ | 170 x 170 x 36 mm | 40 |
| 22W SF | RD/SQ | 225 x 225 x 36 mm | 30 |

*SF : SURFACE PANEL
DIMENSIONS

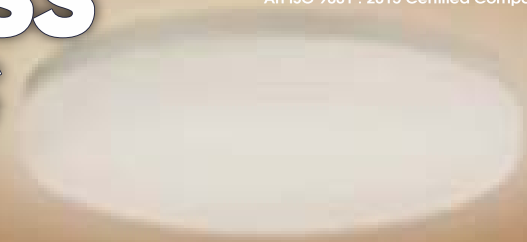


**3 IN 1 ALSO
AVAILABLE**

Hi-WAY PREMIUM RIMLESS SURFACE SERIES



- **Quality tested LED technology ensure long life.**
- **Driver with high voltage protection, HPF High Efficiency Isolated.**
- **Surge protection upto 3.0KV.**
- **Lumens 100-110 Lm/W**
- **Aluminium Pressure Die-cast housing.**



APPLICATIONS



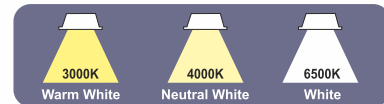
BED ROOM



LIVING ROOM



OFFICE



IP20
FIXTURE

<15%
LESS THD

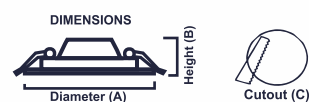
3.0
KV SP

>0.9
HIGH PF

>80
HIGH CRI

| ITEM | SHAPE | DIMENSION (AxB) | CUT OUT © | MASTER PACKING |
|----------------|-------|-------------------|--------------|----------------|
| 8W Rimless SP | RD/SQ | 90 x 90 x 10 mm | 75x75 mm | 50 |
| 15W Rimless SP | RD/SQ | 145 x 145 x 10 mm | 125 x 125 mm | 40 |
| 22W Rimless SP | RD/SQ | 170 x 170 x 10 mm | 155 x 155 mm | 30 |

*SP : SLIM PANEL



Hi-WAY PREMIUM SURFACE PANEL SERIES



- **Quality tested LED technology ensure long life.**
- **Easy to fix on surface.**
- **Driver with high voltage protection, HPF High Efficiency Isolated.**
- **Surge protection upto 3.0KV.**
- **Lumens 100-110 Lm/W**
- **Polycarbonate housing.**



APPLICATIONS



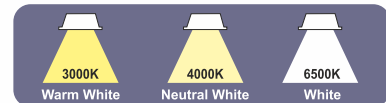
BED ROOM



LIVING ROOM



OFFICE



IP20
FIXTURE

<15%
LESS THD

3.0
KV SP

>0.9
HIGH PF

>80
HIGH CRI

| ITEM | SHAPE | DIMENSION (AxB) | MASTER PACKING |
|--------|-------|-----------------|----------------|
| 8W SP | RD/SQ | 125 x 125 mm | 50 |
| 15W SP | RD/SQ | 145 x 145 mm | 50 |
| 22W SP | RD/SQ | 170 x 170 mm | 40 |

*SF : SURFACE PANEL



**3 IN 1
ALSO AVAILABLE**

Hi-WAY 2 IN 1 SURFACE PANEL SERIES



- **Quality tested LED technology ensure long life.**
- **Easy to fix on surface.**
- **Driver with high voltage protection, HPF High Efficiency Isolated.**
- **Surge protection upto 3.0KV.**
- **Lumens 100-110 Lm/W**
- **Aluminium Pressure Die-cast housing.**



APPLICATIONS



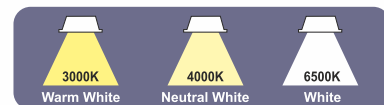
BED ROOM



LIVING ROOM



OFFICE



IP20
FIXTURE

<15%
LESS THD

3.0
KV SP

>0.9
HIGH PF

>80
HIGH CRI

| ITEM | SHAPE | DIMENSION (AxB) | MASTER PACKING |
|-----------|-------|-----------------|----------------|
| 6+3 W SF | RD/SQ | 142 x 142 mm | 50 |
| 12+4 W SF | RD/SQ | 194 x 194 mm | 40 |
| 3+2 W SF | RD/SQ | 102 x 102 mm | 50 |

*SF : SURFACE PANEL

Hi-WAY PREMIUM STRIKER SERIES

- **Quality tested LED technology ensure long life.**
- **Easy to fix on surface.**
- **Driver with high voltage protection, HPF High Efficiency Isolated.**
- **Surge protection upto 3.0KV.**
- **Lumens 100-110 Lm/W**



APPLICATIONS



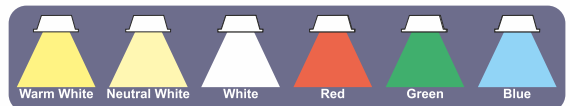
BED ROOM



LIVING ROOM



OFFICE



| ITEM | SHAPE | DIMENSION (AxB) | MASTER PACKING |
|--------|-------|-----------------|----------------|
| 5 W SF | RO/SQ | 69X14 mm. | 100 |

Hi-WAY 2 IN 1 JUNCTION LIGHT SERIES



APPLICATIONS



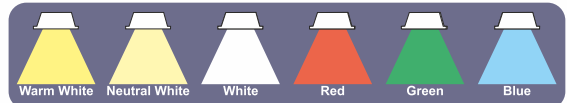
BED ROOM



LIVING ROOM



OFFICE



IP20
FIXTURE

<15%
LESS THD

4.0
KV SP

>0.9
HIGH PF

>80
HIGH CRI

| ITEM | SHAPE | DIMENSION (AxB) | MASTER PACKING |
|--------|-------|-----------------|----------------|
| 7+7W | Round | Junction Box | 50 |
| 12+12W | Round | Junction Box | 50 |

ALSO AVAILABLE IN SINGLE COLOUR

Hi-WAY CONCEALED LIGHT SERIES



- **Quality tested LED technology ensure long life.**
- **Driver with high voltage protection, HPF High Efficiency Isolated.**
- **Surge protection upto 3.0KV.**
- **Lumens 100-110 Lm/W**



PLUTO 6W



DECO 7W



APPLICATIONS



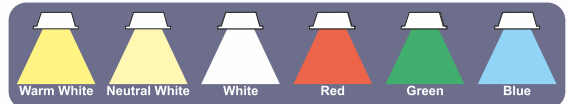
BED ROOM



LIVING ROOM



OFFICE



| | | | | |
|-----------------|------------------|--------------|-----------------|-----------------|
| IP20 FIXTURE | <15% LESS THD | 4.0 KV SP | >0.9 HIGH PF | >80 HIGH CRI |
|-----------------|------------------|--------------|-----------------|-----------------|

| ITEM | SHAPE | CUT OUT © | MASTER PACKING |
|--------------|-------|-----------|----------------|
| 7W Concelled | Round | 75mm | 50 |
| 9W Concelled | Round | 75mm | 50 |

Available In 3-1 Colour
440V Protection
4KV Serge Protection
Aluminium Housing

Hi-WAY DEEP JUNCTION LENS LIGHT SERIES



- **Driver with high voltage protection, HPF High Efficiency Isolated.**
- **Quality tested LED technology ensure long life.**
- **Surge protection upto 4.0KV**
- **Lumens 110-120 Lm/W**



APPLICATIONS



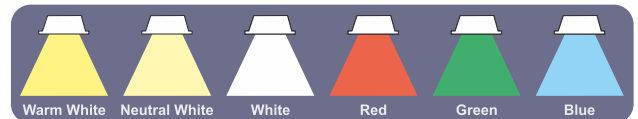
BED ROOM



LIVING ROOM



OFFICE



Warm White

Neutral White

White

Red

Green

Blue

| | | | | |
|------------------------|----------------------------|---------------------|---------------------------|---------------------------|
| IP20 FIXTURE | <15% LESS THD | 4.0 KV SP | >0.9 HIGH PF | >80 HIGH CRI |
|------------------------|----------------------------|---------------------|---------------------------|---------------------------|

AVAILABLE IN 3-1 COLOUR
440V PROTECTION
4KV SERGE PROTECTION

| ITEM | SHAPE | DIMENSION (AxB) | CUT OUT © | MASTER PACKING |
|------------|-------|-----------------|------------|----------------|
| 5W Deep JL | Round | 85 mm * 85 mm | 55 x 55 mm | 50 |

Hi-WAY T-LIGHT SERIES

- **Quality tested LED technology ensure long life.**
- **Driver with high voltage protection, HPF High Efficiency Isolated.**
- **Surge protection upto 3.0KV.**
- **Lumens 120-130 Lm/W**
- **Polycarbonate housing.**



APPLICATIONS



BED ROOM



LIVING ROOM



OFFICE



3000K
Warm White



4000K
Neutral White



6500K
White

IP20
FIXTURE

<15%
LESS THD

4.0
KV SP

>0.9
HIGH PF

>80
HIGH CRI

| ITEM | SHAPE | DIMENSION (AxB) | MASTER PACKING |
|------|-------|-----------------|----------------|
| 10 W | T | 200X30 mm. | 50 |

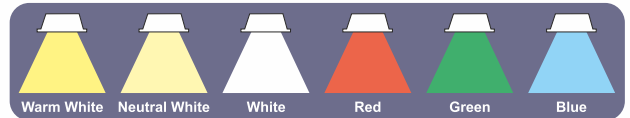
Hi-WAY BULB SERIES



- **Quality tested LED technology ensure long life.**
- **Lumen 120-130 Lm/W**
- **Driver Based Bulb.**



APPLICATIONS



IP20
FIXTURE

<15%
LESS THD

>0.9
HIGH PF

>80
HIGH CRI

| ITEM | CCT | MASTER PACKING |
|------------------|-------|----------------|
| 0.5 W Bulb Light | White | 100 |
| 7 W Bulb Light | White | 100 |
| 9 W Bulb Light | White | 100 |
| 12 W Bulb Light | White | 100 |
| 15 W Bulb Light | White | 100 |
| 20 W Bulb Light | White | 100 |
| 30 W Bulb Light | White | 50 |
| 50 W Bulb Light | White | 30 |



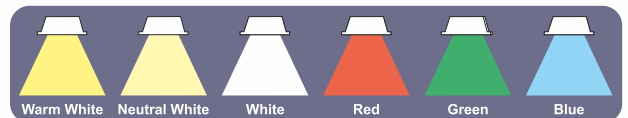
Hi-WAY BATTEN LIGHT SERIES



- **Changes color by switching OFF and ON.**
- **Quality tested LED technology ensure long life.**
- **Driver with high voltage protection, HPF High Efficiency Isolated.**
- **Surge protection upto 3.0KV.**
- **Lumens 120-130 Lm/W**
- **Aluminum Pressure Die-cast Housing.**



APPLICATIONS

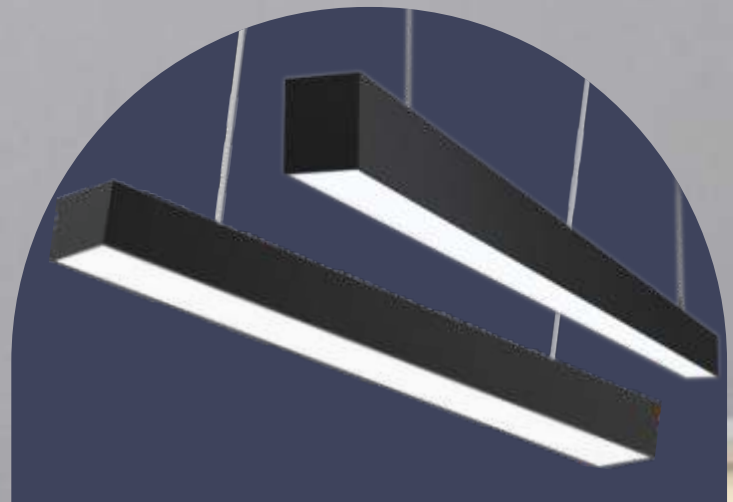


| | | | | |
|------------------------|----------------------------|---------------------|---------------------------|---------------------------|
| IP20 FIXTURE | <15% LESS THD | 3.0 KV SP | >0.9 HIGH PF | >80 HIGH CRI |
|------------------------|----------------------------|---------------------|---------------------------|---------------------------|

| ITEM | SHAPE | LENGTH (mm) | MASTER PACKING |
|----------------|------------|-------------|----------------|
| 20W LED Batten | TUBE LIGHT | 1120 mm | 30 |
| 40W LED Batten | TUBE LIGHT | 1200 mm | 30 |

Hi-WAY PREMIUM SUSPENDED LIGHT SERIES

- **Quality tested LED technology ensure long life.**
- **Driver with high voltage protection, HPF High Efficiency Isolated.**
- **Surge protection upto 3.0KV.**
- **Lumens 120-130 Lm/W**
- **Aluminum Pressure Die-cast Housing.**



APPLICATIONS



BED ROOM



LIVING ROOM



OFFICE



KITCHEN



CEILING



3000K
Warm White



4000K
Neutral White



6500K
White

IP20
FIXTURE

<15%
LESS THD

3.0
KV SP

>0.9
HIGH PF

>80
HIGH CRI

ITEM

14W Linear Suspended

28W Linear Suspended

56W Linear Suspended

LENGTH (mm)

1200 mm

1200 mm

1200 mm

MASTER PACKING

4

4

4



**Hi-WAY
BLDC FAN &
HOME APPLIANCES**

**UPCOMING
PRODUCT**



SUBMERSIBLE CABLE

ALUMINIUM CABLE

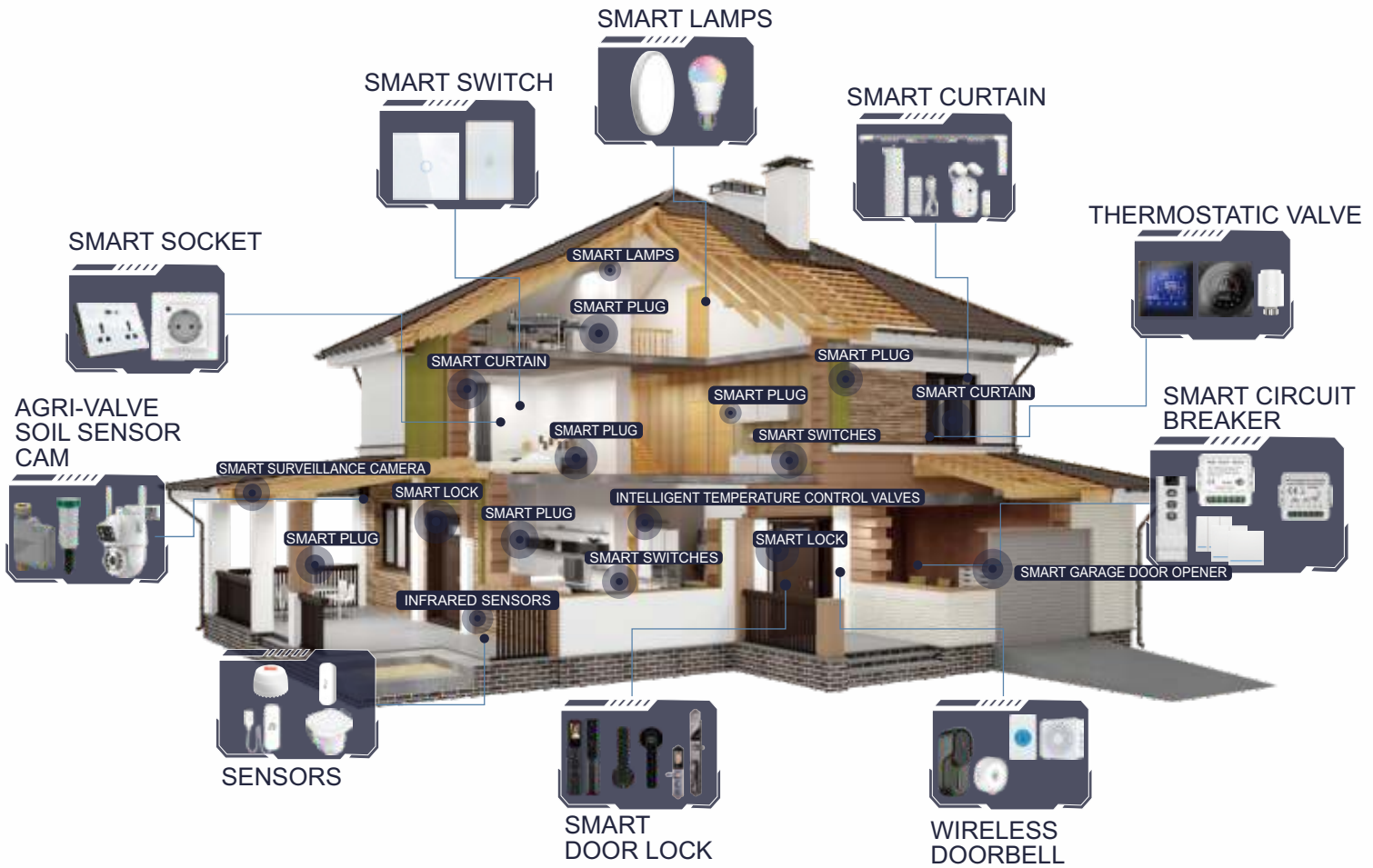
ALUMINIUM WIRE

ARMOURED CABLE

MULTISTRAND WIRE

***Hi-WAY
WIRES & CABLES***

***UPCOMING
PRODUCT***



Smart Switch



Smart Sockets



Smart Doorbell



Multi medias



Air Purification



Door Locks



Security equipment



Intelligent lighting fixtures



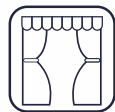
Thermometer



Soil Monitoring



CCTV Camera



Smart Curtain



Acitivity Sensor




Flood Sensor



Smart Irrigation

**Hi-WAY
SMART HOME
AUTOMATION SERIES**

**UPCOMING
PRODUCT**



An important part of smart city is the intelligence of lighting Smart sheet light is not only a lamp it in the camer of a smart city public facilities and the node of smart network. The purpose to achieve on demand lighting, intelligent operation and maintenance, interconnection of things, controllable management, energy conservation and emission reduction, to reduce the burden on the earth and benefit mankind

BENEFITS

WIRELESS CITY

ENVIRONMENTAL DETECTION

METEOROLOGICAL MONITORING

LUMINAIRE CONTROL

PUBLIC BROADCASTING

MONITOR SYSTEM

INFORMATION RELEASE

EMERGENCY CALL

LIFE INFORMATION

CHARGING SERVICE

Hi-WAY
INTELLIGENT STREET
LIGHT POLE

UPCOMING
PRODUCT



HIWAY LIGHTING SOLUTIONS PVT LTD

Survey No 142/2, Near Govt School, Gari Piplia gram, After Mangalia Railway crossing,
Mangalia, Indore - 453771



HiWAY Lighting Solutions FZ-LLCFDRK7222, Compass Building, Al Shohada Road,
Al Hamra Industrial Zone-FZ, Ras Al Khaimah, United Arab Emirates Phone: +971 54 482 9592



Hotel Gaurav Compound, Behind Police Station, Chhindwada, MP - 480001




Gayatri Enclave, K Road, Bistupur, Jamshedpur, Jharkhand - 831001



B/72, Transport Nagar Bhadurpur, kumrahar, Patna - 800007



E-174, Kanpur Road, Transport Nagar, Lucknow, U.P., 226012

 www.hiwayledlights.in

For Inquiry Mail

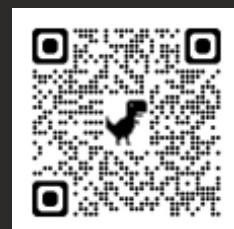
Product - info@hiwayledlights.in

Sales - sales@hiwayledlights.in

Accounts - accounts@highwayledlights.in

Supports - supports@highwayledlights.in

TO KNOW MORE



SCAN THE QR CODE